

**WORK AUTHORIZATION #01
NASSAU COUNTY
BOARD OF COUNTY COMMISSIONERS**

Consultant:	Pond & Company Corporation (POND)
Contract Number:	CM3501
Contact Name:	Tabatha Carlton
Contact Number:	904.396.3556
Email:	carlton@pondco.com

CURRENT WORK AUTHORIZATION			
Project Short Title: Goffinsville Boat Ramp Improvements-Task Order #1			
		CONTRACT OVERVIEW	
Date Submitted	12/19/23	Total of Previous Authorizations	0
Amount	\$319,289.95	This Work Authorization	\$319,289.95
Scheduled Completion	Eighteen (18) months from date of execution	New Contract Amount including this work authorization	\$319,289.95

This Work Authorization is to the AGREEMENT between Nassau County and Pond & Company ("Vendor") for Professional Architectural and Engineering Services, dated November 27, 2023. The services to be provided under this Work Authorization are as follows:

ARTICLE 1. Services Described as:

Vendor shall provide professional design services for the Goffinsville Boat Ramp improvements in accordance with the Vendor's Proposal, a copy of which is attached hereto as Exhibit "A".

ARTICLE 2. Time Schedule

Vendor anticipates their earliest starting date to be five (5) days from receipt of execution of this Work Authorization with an estimated duration of eighteen (18) months to complete the Task Order.

ARTICLE 3. Budget

Vendor will perform the services outlined herein for the lump sum amount of Three Hundred Nineteen Thousand, Two Hundred Eighty-Nine Dollars and 95/100 \$319,289.95. Vendor will be using rates previously established under Contract CM3501.

ARTICLE 4. Other Provisions


The Services covered by this Work Authorization will be performed in accordance with the provisions set forth in the AGREEMENT referenced above and any of its attachments or schedules. Additional terms or contract provisions whether submitted purposely or inadvertently, shall have no force or effect. This Work Authorization will become a part of the referenced AGREEMENT when executed by both parties.

Any Work Authorization entered into prior to expiration or termination set forth in the AGREEMENT shall continue in effect through the earlier of: (i) the date all of the Services thereunder have been fully completed and accepted by Nassau County, or (ii) until such time as such Work Authorization expires or is terminated in accordance with its terms or is terminated pursuant to Article 2 hereof.

In presenting this Work Authorization, Vendor agrees that:

Unless detailed herein, all drawings, data, electronic files and other information required for this Work Authorization has been accepted by Vendor. Specifically, all electronic files have been reviewed and accepted for the purposes of this Work assignment. Any additional information, including detailed scope of services are attached.

AGREED TO BY:

BY: 
Print Name: Robert P. Williams
Title: Chief Executive Officer
Date: 19 Dec 23

[This space intentionally left blank.]

RECOMMENDED AND APPROVED BY NASSAU COUNTY:

Department Head/Managing Agent: Doug Podiak 12/21/2023

Procurement: Karen Helms 12/21/2023

Office of Management & Budget: Chris Lacambra 12/21/2023 ^{JP} 12/21/2023

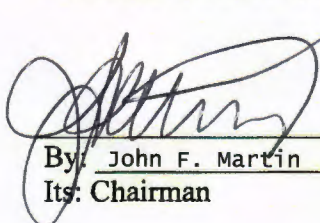
County Manager: Taco E. Pope, AICP 12/22/2023
Taco E. Pope, AICP

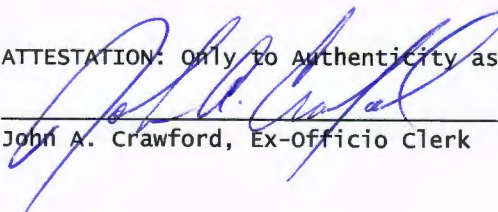
Ex-Officio Clerk: *See Below
John A. Crawford

County Attorney: Denise C. May 12/22/2023 ^{DJ}
Denise C. May 12/22/2023

APPROVED by the BOARD OF COUNTY COMMISSIONERS, this 8th day of January, 2024.

BOARD OF COUNTY COMMISSIONERS
NASSAU COUNTY, FLORIDA


By: John F. Martin
Its: Chairman

ATTESTATION: Only to Authenticity as to Chairman's Signature:

John A. Crawford, Ex-officio Clerk

ACCOUNT NO.: 01075572-563701 C0077



3500 Parkway Lane, Suite 500
Peachtree Corners, Georgia 30092

T: 678.336.7740 | F: 678.336.7744
www.pondco.com

December 14, 2023

David Hearn
Deputy Public Works Director
Nassau County
dhearn@nassaucountyfl.com

Re: **Task Order #01 - Goffinsville Boat Ramp Improvements
Professional Design Services Fee Proposal**

Pond & Company (Pond) is pleased to submit this proposal for engineering design and construction management services for the above project. The paragraphs below describe the professional services and fees to accomplish this work.

PROJECT UNDERSTANDING:

Improvements to the Goffinsville Boat Ramp on the Nassau River are needed based on the recommendations in the Final Flow Conditions Analysis Report prepared by Ayres in September 2020. This boat ramp is experiencing problems associated with excessive currents. This analysis assessed three alternatives for improvements: grading and rip rap, baffles, jetty. The Grading and Rip Rap alternatives were the recommended improvements from this report selected by the County to move into design.

The Nassau River at the Goffinsville Nassau River Park and Boat Ramp is: 1) a Navigable Water of the United States (Rivers and Harbors Act (RHA), Section 10), 2) part of the Nassau River – St. Johns River Marshes Aquatic Preserve (an Aquatic Preserve (AP) and Outstanding Florida Water (OFW)), 3) Sovereign Submerged Lands (SSL), and 4) a Federal Emergency Management Agency (FEMA) VE zone (El. 10-11). According to State and Federal wildlife agencies, the Nassau River is accessible to protected species such as West Indian Manatee, shortnose Sturgeon and multiple species of sea turtles and serves as Essential Fish Habitat for a number of coastal species. The State Historic Preservation Office (SHPO) has conducted compliance reviews of the project area during initial permitting of the Goffinsville Nassau River Park and Boat Ramp and determined that there may be cultural / historic resources in the area.

PROFESSIONAL SERVICES:

The work will consist of reviewing the recommendations in the Goffinsville Boat Ramp Final Flow Conditions Analysis Report, coordinating with Nassau County to update this hydraulic analysis and report to reflect proposed design, updating the Concept, and preparing a Concept Cost Estimate. We will then prepare site plans, supporting design calculations, and environmental documents sufficient for permitting and construction of the project. The following scope will be performed under this Task Order.

Scope of Work

Task 1: Concept Design

Task 1A: Project Management - Pond will prepare an abbreviated project management and coordination plan to indicate the lines of communication and work schedule. Pond anticipates monthly virtual progress meetings with the County throughout the design process.

Task 1B: Review of Existing Report – Review existing Goffinsville Boat Ramp Final Flow Conditions Analysis Report and Coordinate with the County to update the Hydraulic Analysis based on a preliminary concept on an aerial and utilizing standard FDOT pay items and specs as much as possible.

Task 1C: Update/Enhance Concept and Cost Estimate – Pond will prepare a conceptual site layout upon receipt of the topographic survey and geotechnical report described in Task 2 below. The conceptual design will show proposed grading, geotextile and rip rap placement, baffle locations, and erosion and sediment controls. An updated cost estimate will be prepared based on the conceptual design. The concept and cost estimate will be submitted to the County for review and comment.

Deliverables (Task 1)

- Abbreviated Project Management/Communication Plan
- Schedule
- Updated/Enhanced Concept
- Updated/Enhanced Cost Estimate

Task 2: Data Collection

Task 2A: Survey –. Specific Survey tasks include:

A field ran topography, as-built, right of way and boundary line determination will be performed in the areas described above.

- Topographic survey referenced horizontally to the Florida State Plane Coordinate System, NAD 83/2011, Florida East Zone.
- Elevations referenced to NAVD 88.
- Elevations at distances not to exceed 50 feet upland of Mean High-Water Line (MHWL).
- Elevations at distances not to exceed 25 feet waterward of MHWL.
- The horizontal location of visible above ground features and improvements.
- Mapping of MHWL as provided to this office by the Florida Department of Environmental Protection (FDEP).
- The horizontal and vertical location of edges of asphalt and centerlines.
- Critical spot elevations of existing pavements (i.e., boat ramp, docks, bulkheads, walkways, drives, parking, etc.)
- Elevations at significant breaks in grade.
- The location and elevations of storm water features (ponds, swales, ditches, berms, and structures).
- The horizontal location of visible above ground indicators of utilities.
- Invert elevations, pipe sizes and materials.

- The depiction of matters of record (easements, right of ways, etc.) reasonably known of and available to this office prior to the execution of survey.
- Mapping contours at 1' intervals.
- Mapping in AutoCad Civil 3D.
- Preparation of an FDEP compliant Tidal Water Survey map.

Task 2B: Geotech – Specific Survey tasks include:

- Install 2-50 feet deep standard penetration test borings in the area of the proposed rip rap and baffle piles.
- Conduct laboratory testing
 - Particle size analysis every five feet (20 tests)
 - Plastic limit and liquid limit every 20 feet (5 tests)
 - Organic test every 20 feet (5 tests)
- Prepare a Geotechnical Report, Including:
 - Subsurface materials encountered.
 - Plan view map depicting the estimated settlement of the proposed rip rap
 - Geotechnical design parameters for the proposed baffle piles
 - Geotechnical design recommendations and construction considerations

Task 2C: Environmental Permitting for geotechnical exploration (Time Sensitive – Critical Path): Pond understands that Geotechnical Explorations (soil borings) are proposed to be conducted waterward of the mean high-water line of the Nassau River. Assuming that boring methodology can be designed to comply with the USACE Nationwide Permit (NWP) 6 -Survey Activities, Pond will prepare and submit a Pre-Construction Notification (PCN) form (ENG Form 6082) and supplemental information to USACE SAJ. Pond will participate in one (1) virtual preapplication meeting, respond to one (1) Request for Additional Information, and attend a one (1) site visit with USACE SAJ staff, if necessary. Pond assumes that the Geotechnical Exploration is exempt from State Environmental Resources Permitting pursuant to Chapter 62-330, Florida Administrative Code (FAC).

Task 2D: Environmental Screening Review and Report – Using publicly available environmental databases and site-specific information provided by Nassau County, Pond will evaluate the potential environmental constraints and permitting requirements for the proposed concept. The Report will include a Permit Matrix that identifies applicable permits and approvals that will be necessary for the project as well as a proposed schedule for federal, state and local authorizations that are necessary.

Task 2E: Environmental Surveys – Pond will conduct wetland / waters delineations in accordance with state and federal wetland delineation methodologies. Pond will conduct general, pedestrian listed species surveys for presence / absence of suitable habitat for state and federal protected species. Digital GPS / GIS / CADD data files will be provided for inclusion in the design plans. The Environmental Screening Report described in Task 2D will be updated to include GPS mapping of aquatic resources / listed species findings, narrative summary discussion, data forms, photographs and figures sufficient to support permit applications. Pond will rely upon the previous SHPO compliance reviews and

determinations that the project is not likely to affect cultural / historic resources; therefore, additional cultural / historical resources studies and surveys (CRAS) are excluded.

Deliverables (Task 2)

- Topographic Survey (PDF and AutoCAD Civil 3D files)
- Geotechnical Report
- Environmental Surveys and Screening Report

Task 3: Preliminary Design

Task 3A: Preliminary Design Plans and Cost Estimate – The preliminary design will address comments received on the concept design plans.

The preliminary plans deliverable will include the following plan sheets:

- Cover Sheet
- General Notes and Quantities
- Existing Conditions Plan
- Site Plan
- Grading Plan
- Cross-sections
- Specific details
- Pile Data Sheet
- Erosion and Sediment Control Plans

Task 3B: Nassau County Coordination – We anticipate monthly virtual progress meetings with the County. We will submit for comment/approval preliminary plans to the County. We will respond to any questions and incorporate appropriate comments into the plans. We will also meet with the County, as requested. We will attend one (1) meeting and respond to one (1) round of comments for each agency before incorporating appropriate comments into the plans.

Task 3C: Environmental Design Review – Pond’s Permit Specialists will participate in up to eight (8) cumulative hours of design review meetings and coordination with Nassau County and the Project Team to develop plans with sufficient environmental information and details necessary to support complete permit application submittals.

Task 3D: Structural Design – This will include gathering data from Geotech and the Hydraulic Analysis for design parameters to prepare calculations and pile data sheet using FDOT standard piles. The structural team will attend up to eight (8) cumulative hours of design review meetings and coordination with Nassau County and the Project Team.

Task 3E: Constructability Review - VIA will review plans, documents and perform a field review to analyze what potential challenges or concerns may be encountered based on the design. VIA will also review the design elements of the project from a constructability and conformance with County and FDOT specifications. The review will not include design calculation reviews or independent design calculations. VIA will provide Pond with a summary of the analysis and a list of items to be addressed or considered as the deliverable product for this statement of work.

Deliverables (Task 3)

- Preliminary Plans
- Preliminary Cost Estimate
- Structural Calculations
- Constructability Review

Task 4: Permitting

Task 4A: Federal Environmental Permitting – Based upon our cursory review of the proposed alternatives, Pond assumes a Standard Permit from the U.S. Army Corps of Engineers (USACE), Jacksonville District (SAJ) will be required. On Nassau County’s behalf, Pond will prepare and submit an Application for Department of the Army Permit (ENG Form 4345) and supplemental information to USACE SAJ. Pond will participate in one (1) virtual preapplication meeting, respond to one (1) Request for Additional Information, and attend a one (1) site visit with USACE SAJ staff, if necessary.

Task 4B: State Environmental Permitting - Based upon our cursory review of the proposed alternatives, Pond assumes an Individual Environmental Resource Permit (ERP) and SSL Easement from the St. Johns River Water Management District (SJRWMD) will be required. On Nassau County’s behalf, Pond will prepare and submit an Application for Individual Environmental Resource Permit and Authorization to Use State-Owned Submerged Lands (including Section A, C and F) and supplemental information to SJRWMD. Pond will participate in one (1) virtual preapplication meeting, respond to one (1) Request for Additional Information, and attend a one (1) site visit with SJRWMD staff, if necessary.

Task 4C: State-Owned Submerged Lands Easement and Sketch – In support of the Environmental Permitting, Pond’s team will prepare a sketch and legal description of the sovereign submerged land (SSL) easement. The sketch and legal will be prepared in compliance with the FDEP requirements.

Deliverables (Task 4)

- Permit Documents
- SSL easement sketch and legal description

Task 5: Final Design

Task 5A: Final Design Plans and Cost Estimate – After preliminary plans approval, Pond will develop final plans and technical specifications that will be suitable for construction. Pond will also update the construction cost estimate. Pond assumes that the County will provide the necessary Front End documents for bidding.

Task 5B: Nassau County Coordination - Pond anticipates monthly virtual progress meetings with the County. Pond will submit for comment/approval final plans to the County. Pond will respond to any questions and incorporate appropriate comments into the plans. Pond will also meet with the County and others as requested. Pond will attend one (1) meeting and respond to one (1) round of comments for each agency before incorporating appropriate comments into the plans. Pond will submit all electrical document files.

Task 5C: Constructability Review - VIA will review plans, documents and perform a field review to analyze what potential challenges or concerns may be encountered based on the design. VIA will also review the design elements of the project from a constructability and conformance with County and FDOT specifications. The review will not include design calculation reviews or independent design calculations. VIA will provide Pond with a summary of the analysis and a list of items to be addressed or considered as the deliverable product for this statement of work.

Deliverables (Task 5)

- Final Plans
- Cost Estimate
- Updated Structural Calculations if needed

Task 6: Preconstruction and Construction Services

Task 6A: Respond to RFIs – During the bidding and construction process, Pond will respond in writing to the contractor’s requests for information.

Task 6B: Pre-Construction Meeting – Pond will prepare for and attend the pre-construction meeting to answer any questions and to make sure that the contractor fully understands the scope and nature of this project.

Task 6C: Review Shop Drawings – During the construction process, Pond will review and stamp shop drawings from the contractor with No Exceptions Taken, Revise and Resubmit, Approved with Corrections, or Rejected.

Any additional post design services will be negotiated on an as needed basis.

Task 7: Construction Management

Part Time CEI (Assumes a 6-month project of time) - This option is more checking on progress and not to see everything as it is built. An inspector will be present for critical operations like concrete pours and pile driving. Other non-critical activities, such as installation of rip rap, will be visually checked after work has been done. The staff hour and fee estimates will be based on the following:

- Part time senior inspector where one week they are there 2 days that week and the following week 3 days at 8 hrs/day.
- SPE is set at 4 hrs per week
- Project Administrator is set at 8 hrs per week.
- Contract Support Specialist at 4 hrs per week.
- Allowance for lab testing if cylinders or proctors are needed. Will not be needed if the contractor will be responsible for testing.

SCHEDULE:

Pond understands the importance of expediting the delivery of this project. We anticipate that the design and permitting of the boat ramp improvements will take approximately 18 months.

ASSUMPTIONS:

The design plans will be prepared as a Nassau County let and funded project. If this project is federalized, additional services will be required.

Services or tasks not specifically outlined above are excluded and would be considered additional services. Services not included in the scope:

- NEPA-level Environmental Document
- Any type of Traffic Analysis
- Structural Design
- Additional meetings
- Contamination Assessments
- Dewatering services and permitting
- Application fees
- Mitigation Services and Fees
- Bulkhead design
- Local County Permitting
- Species-specific surveys and permitting
- Construction Stormwater Permitting (NPDES CGP)
- Post-Design & Construction Environmental Services
- Public Involvement
- ROW acquisition
- In-water resource assessment
- Dock design
- Hydrodynamic modeling

PROFESSIONAL FEES:

Pond proposes to accomplish *Task 1* through *Task 7* for a not-to-exceed fee of \$319,316.16.

A breakdown of these fees is shown below:

- *Task 1 – Concept Design: \$12,309.82*
- *Task 2 – Data Collection: \$37,285.36*
- *Task 3 – Preliminary Design: \$50,799.58*
- *Task 4 – Permitting: \$40,129.92*
- *Task 5 – Final Design: \$26,495.92*
- *Task 6 – Preconstruction and Construction Services: \$14,366.56*
- *Task 7 – Construction Management - \$115,929.00*
- *Contingency (Requires Authorization) - \$22,000.00*

If this fee and scope is acceptable, Pond & Company is available to begin work immediately upon Notice to Proceed. If you would like us to discuss or modify the scope, please contact myself, Justin Phillips, or Chris Fagerstrom, who will serve as this Task Manager. If you need any additional information, please feel free to contact me at (813) 967-0186.

Sincerely,

POND & COMPANY



Tabatha Carlton, PE
Consultant Contract Manager



George Fragulis, PE
Senior Vice President

Cc: Robert Companion, PE – Deputy County Manager – County Engineer
Justin Phillips, PE – Deputy Consultant Contract Manager
Chris Fagerstrom, PE – Task Order Manager

Nassau County

Goffinsville Park Boat Ramp Improvements Fernandina Beach, FL

SUMMARY BY Task

COST AMOUNT OF CONTRACT CHANGE ORDER PROPOSAL

12/19/2023

	PHASE AMOUNTS
Task 1 - Review & Verification of Recommended Alternatives	\$ 14,380.89
Task 2: Data Collection	\$ 42,238.99
Task 3: Preliminary Design	\$ 55,753.21
Task 4: Permitting	\$ 45,171.75
Task 5: Final Design	\$ 31,449.55
Task 6: Preconstruction and Post Design Services	\$ 14,366.56
Task 7: Construction Management (T&M for 6 months)	\$ 115,929.00
TOTAL DESIGN COST	\$ 319,289.95

Nassau County
Task 1 -summary

PROJECT: Goffinsville Boat Ramp

Task 1 - Review & Verification of Recommended Alternatives

PERSONNEL	EST. HOURS	RATE/HR.	COST \$	TOTALS
Principal-in-Charge	0	\$ 306.36	\$ -	
Senior Project Manager / Chief Engineer	19	\$ 257.00	\$ 4,883.00	
Deputy Project Manager / Transportation Engineer III	3	\$ 162.86	\$ 488.58	
Senior Structural Engineer	6	\$ 226.78	\$ 1,360.68	
Structural Engineer	6	\$ 118.87	\$ 713.22	
Senior Civil Engineer	14	\$ 222.00	\$ 3,108.00	
Civil Engineer	18	\$ 131.22	\$ 2,361.96	
Senior Environmental Scientist	2	\$ 160.00	\$ 320.00	
Environmental Scientist	2	\$ 100.00	\$ 200.00	
Secretary/ Clerical	9	\$ 105.05	\$ 945.45	
TOTAL DIRECT LABOR				79 Manhours \$ 14,380.89
DIRECT COSTS (SPECIFY):				
ITEM	UNIT COST	QUANTITY	TOTALS	
Typically Direct Cost, such as milage, is included in loaded rates.			\$ -	
Only use this section for unique material costs.			\$ -	
			\$ -	
			\$ -	
			\$ -	
Direct Cost Total			\$ -	
SUBCONSULTANTS (LIST):				
SUB CONSULTANT			TOTALS	
DRMP (Survey/SUE)			\$ -	
			\$ -	
Subconsultant Sub Total			\$ -	
COST AMOUNT FOR PHASE			\$ 14,380.89	

Nassau County
Task 1 -detail

PROJECT: Goffinsville Boat Ramp
Task 1 - Review & Verification of Recommended Alternatives

TASKS	Assumptions: current phase to last 2 months	No. of SHT	Principal-in-Charge	Manager / Chief Engineer	Project Manager / Transportation	Senior Structural Engineer	Structural Engineer	Senior Civil Engineer	Civil Engineer	Senior Environmental Scientist	Environmental Scientist	Secretary/Clerical	TOTAL	% OF TOTAL
Non-Drawing Tasks														
Project Management (Task 1A)	Project Set-up, Coordination, Prepare Progress Reports, Billing, Internal Progress Meetings,			8								8	16	20.3%
Coordination and Meetings	One virtual meeting to review findings			2		2	2	2		2	2		12	15.2%
Coordinate Unknowns				3	3			2	2			1	11	13.9%
Engineering Design Tasks														
Task 1B				4		4	4	4					16	20.3%
Task 1C				2				6	16				24	30.4%
Plan Set Deliverables														
TOTALS		0	0	19	3	6	6	14	18	2	2	9	79	100.0%

Nassau County
Task 2: summary

PROJECT: Goffinsville Boat Ramp
Task 2: Data Collection

PERSONNEL	EST. HOURS	RATE/HR.	COST \$	TOTALS
Principal-in-Charge	0	\$ 306.36	\$ -	
Senior Project Manager / Chief Engineer	21	\$ 257.00	\$ 5,397.00	
Deputy Project Manager / Transportation Engineer III	6	\$ 162.86	\$ 977.16	
Senior Structural Engineer	0	\$ 226.78	\$ -	
Structural Engineer	0	\$ 118.87	\$ -	
Senior Civil Engineer	12	\$ 222.00	\$ 2,664.00	
Civil Engineer	6	\$ 131.22	\$ 787.32	
Senior Environmental Scientist	23	\$ 160.00	\$ 3,680.00	
Environmental Scientist	58	\$ 100.00	\$ 5,800.00	
Secretary/ Clerical	7	\$ 105.05	\$ 735.35	
TOTAL DIRECT LABOR		133 Manhours		\$ 20,040.83
DIRECT COSTS (SPECIFY):				
ITEM	UNIT COST	QUANTITY	TOTALS	
Typically Direct Cost, such as milage, is included in loaded rates.			\$	-
Only use this section for unique material costs.			\$	-
			\$	-
			\$	-
			\$	-
Direct Cost Total			\$	-
SUBCONSULTANTS (LIST):				
SUB CONSULTANT			TOTALS	
DRMP (Survey/SUE) (Task 2A)	\$ 9,300.00	\$ 1.00	\$	9,300.00
EGS (Geotech) (Task 2B)	\$ 12,898.16	1	\$	12,898.16
Subconsultant Sub Total			\$	22,198.16
COST AMOUNT FOR PHASE			\$	42,238.99

Nassau County
Task 2: detail

PROJECT: Goffinsville Boat Ramp
Task 2: Data Collection

TASKS	Assumptions: current phase to last 2 months	No. of SHT	Principal-In-Charge	Senior Project Manager / Chief Engineer	Manager / Transportation Engineer III	Senior Structural Engineer	Structural Engineer	Senior Civil Engineer	Civil Engineer	Senior Environmental Scientist	Environmental Scientist	Secretary/Clerical	TOTAL	% OF TOTAL
Non-Drawing Tasks														
Project Management	Coordination with subs			4				6				4	14	10.5%
Coordinate Unknowns				6	6			6	6			3	27	20.3%
Engineering Design Tasks														
Task 2C				5						10	24		39	29.3%
Task 2D				2						5	10		17	12.8%
Task 2E				4						8	24		36	27.1%
Plan Set Deliverables														
TOTALS		0	0	21	6	0	0	12	6	23	58	7	133	100.0%

Nassau County

Task 3: summary

PROJECT: Goffinsville Boat Ramp

Task 3: Preliminary Design

PERSONNEL	EST. HOURS	RATE/HR.	COST \$	TOTALS
Principal-in-Charge	0	\$ 306.36	\$ -	
Senior Project Manager / Chief Engineer	30	\$ 257.00	\$ 7,710.00	
Deputy Project Manager / Transportation Engineer III	6	\$ 162.86	\$ 977.16	
Senior Structural Engineer	16	\$ 226.78	\$ 3,628.48	
Structural Engineer	36	\$ 118.87	\$ 4,279.32	
Senior Civil Engineer	56	\$ 222.00	\$ 12,432.00	
Civil Engineer	130	\$ 131.22	\$ 17,058.60	
Senior Environmental Scientist	4	\$ 160.00	\$ 640.00	
Environmental Scientist	4	\$ 100.00	\$ 400.00	
Secretary/ Clerical	13	\$ 105.05	\$ 1,365.65	
TOTAL DIRECT LABOR		295 Manhours		\$ 48,491.21
DIRECT COSTS (SPECIFY):				
ITEM		UNIT COST	QUANTITY	TOTALS
Typically Direct Cost, such as mileage, is included in loaded rates. Only use this section for unique material costs.				\$ -
				\$ -
				\$ -
				\$ -
				\$ -
Direct Cost Total				\$ -
SUBCONSULTANTS (LIST):				
SUB CONSULTANT				TOTALS
VIA (Constructability Review) (Task 3E)		\$ 7,262.00	\$ 1.00	\$ 7,262.00
Subconsultant Sub Total				\$ 7,262.00
COST AMOUNT FOR PHASE				\$ 55,753.21

Nassau County
Task 3: detail

PROJECT: Goffinsville Boat Ramp
Task 3: Preliminary Design

TASKS	Assumptions: Current phase to last 3 months	No. of SHT	Principal-in-Charge	Senior Project Manager / Chief Engineer	Manager / Transportation Engineer III	Senior Structural Engineer	Structural Engineer	Senior Civil Engineer	Civil Engineer	Senior Environmental Scientist	Environmental Scientist	Secretary/ Clerical	TOTAL	% OF TOTAL
Non-Drawing Tasks														
Project Management	Coordination, Prepare Progress Reports, Billing, Internal Progress Meetings,			10								10	20	6.8%
Coordinate Unknowns				6	6			6	6			3	27	9.2%
Engineering Design Tasks														
Task 3A				4				40	120				164	55.6%
Task 3B				10				10	4				24	8.1%
Task 3C										4	4		8	2.7%
Task 3D						16	36						52	17.6%
Plan Set Deliverables														
TOTALS		0	0	30	6	16	36	56	130	4	4	13	295	100.0%

Nassau County
Task 4: summary

PROJECT: Goffinsville Boat Ramp
Task 4: Permitting

PERSONNEL	EST. HOURS	RATE/HR.	COST \$	TOTALS
Principal-in-Charge	0	\$ 306.36	\$ -	
Senior Project Manager / Chief Engineer	44	\$ 257.00	\$ 11,308.00	
Deputy Project Manager / Transportation Engineer III	6	\$ 162.86	\$ 977.16	
Senior Structural Engineer	0	\$ 226.78	\$ -	
Structural Engineer	0	\$ 118.87	\$ -	
Senior Civil Engineer	22	\$ 222.00	\$ 4,884.00	
Civil Engineer	22	\$ 131.22	\$ 2,886.84	
Senior Environmental Scientist	60	\$ 160.00	\$ 9,600.00	
Environmental Scientist	84	\$ 100.00	\$ 8,400.00	
Secretary/ Clerical	15	\$ 105.05	\$ 1,575.75	
TOTAL DIRECT LABOR				\$ 39,631.75
253 Manhours				
DIRECT COSTS (SPECIFY):				
ITEM		UNIT COST	QUANTITY	TOTALS
Only use this section for unique material costs.				\$ -
				\$ -
				\$ -
				\$ -
Direct Cost Total				\$ -
SUBCONSULTANTS (LIST):				
SUB CONSULTANT				TOTALS
DRMP (Survey/SUE)		\$ 5,540.00	\$ 1.00	\$ 5,540.00
Subconsultant Sub Total				\$ 5,540.00
COST AMOUNT FOR PHASE				\$ 45,171.75

Nassau County Schedule of Fees				
PROJECT: Goffinsville Boat Ramp				
Task 5: Final Design				
PERSONNEL	EST. HOURS	RATE/HR.	COST \$	TOTALS
Principal-in-Charge	0	\$ 306.36	\$ -	
Senior Project Manager / Chief Engineer	26	\$ 257.00	\$ 6,682.00	
Deputy Project Manager / Transportation Engineer III	6	\$ 162.86	\$ 977.16	
Senior Structural Engineer	4	\$ 226.78	\$ 907.12	
Structural Engineer	24	\$ 118.87	\$ 2,852.88	
Senior Civil Engineer	58	\$ 222.00	\$ 12,876.00	
Civil Engineer	22	\$ 131.22	\$ 2,886.84	
Senior Environmental Scientist	0	\$ 160.00	\$ -	
Environmental Scientist	0	\$ 100.00	\$ -	
Secretary/ Clerical	11	\$ 105.05	\$ 1,155.55	
TOTAL DIRECT LABOR		151 Manhours		\$ 28,337.55
DIRECT COSTS (SPECIFY):				
ITEM		UNIT COST	QUANTITY	TOTALS
Typically Direct Cost, such as mileage, is included in loaded rates.				
Only use this section for unique material costs.				
				\$ -
				\$ -
				\$ -
				\$ -
Direct Cost Total				\$ -
SUBCONSULTANTS (LIST):				
SUB CONSULTANT				TOTALS
VIA (Constructability Review) (Task 5C)	\$	3,112.00	\$ 1.00	\$ 3,112.00
				\$ -
				\$ -
Subconsultant Sub Total				\$ 3,112.00
COST AMOUNT FOR PHASE				\$ 31,449.55

Nassau County Schedule of Fees				
PROJECT: Goffinsville Boat Ramp				
Task 6: Preconstruction and Post Design Services				
PERSONNEL	EST. HOURS	RATE/HR.	COST \$	TOTALS
Principal-in-Charge	0	\$ 306.36	\$ -	
Senior Project Manager / Chief Engineer	20	\$ 257.00	\$ 5,140.00	
Deputy Project Manager / Transportation Engineer III	0	\$ 162.86	\$ -	
Senior Structural Engineer	0	\$ 226.78	\$ -	
Structural Engineer	12	\$ 118.87	\$ 1,426.44	
Senior Civil Engineer	20	\$ 222.00	\$ 4,440.00	
Civil Engineer	16	\$ 131.22	\$ 2,099.52	
Senior Environmental Scientist	0	\$ 160.00	\$ -	
Environmental Scientist	0	\$ 100.00	\$ -	
Secretary/ Clerical	12	\$ 105.05	\$ 1,260.60	
TOTAL DIRECT LABOR		80 Manhours	\$	14,366.56
DIRECT COSTS (SPECIFY):				
ITEM	UNIT COST	QUANTITY	TOTALS	
Typically Direct Cost, such as milage, is included in loaded rates.			\$	-
Only use this section for unique material costs.			\$	-
			\$	-
			\$	-
			\$	-
Direct Cost Total			\$	-
SUBCONSULTANTS (LIST):				
SUB CONSULTANT			TOTALS	
			\$	-
			\$	-
			\$	-
Subconsultant Sub Total			\$	-
COST AMOUNT FOR PHASE			\$	14,366.56

Nassau County
Schedule of Fees

PROJECT: Goffinsville Boat Ramp
Task 6: Preconstruction and Post Design Services

TASKS	ASSUMPTIONS: Max 6 months	No. of SHT	Principal-in-Charge	Manager / Chief Engineer	Project Manager / Transportation	Senior Structural Engineer	Structural Engineer	Senior Civil Engineer	Civil Engineer	Senior Environmental Scientist	Environmental Scientist	Secretary/ Clerical	TOTAL	% OF TOTAL
Non-Drawing Tasks														
Project Management	Coordination, Prepare Progress Reports, Billing,			12								12	24	30.0%
Engineering Design Tasks														
Task 6A				2				8	4				14	17.5%
Task 6B				4			4	4					12	15.0%
Task 6C				2			8	8	12				30	37.5%
Plan Set Deliverables														
TOTALS		0	0	20	0	0	12	20	16	0	0	12	80	100.0%

Nassau County Schedule of Fees				
PROJECT: Goffinsville Boat Ramp				
Task 7: Construction Management (T&M for 6 months)				
PERSONNEL	EST. HOURS	RATE/HR.	COST \$	TOTALS
Principal-in-Charge	0	\$ 306.36	\$ -	
Senior Project Manager / Chief Engineer	0	\$ 257.00	\$ -	
Deputy Project Manager / Transportation Engineer III	0	\$ 162.86	\$ -	
Senior Structural Engineer	0	\$ 226.78	\$ -	
Structural Engineer	0	\$ 118.87	\$ -	
Senior Civil Engineer	0	\$ 222.00	\$ -	
Civil Engineer	0	\$ 131.22	\$ -	
Senior Environmental Scientist	0	\$ 160.00	\$ -	
Environmental Scientist	0	\$ 100.00	\$ -	
Secretary/ Clerical	0	\$ 105.05	\$ -	
TOTAL DIRECT LABOR		0 Manhours	\$ -	
DIRECT COSTS (SPECIFY):				
ITEM	UNIT COST	QUANTITY	TOTALS	
Typically Direct Cost, such as mileage, is included in loaded rates.			\$	-
Only use this section for unique material costs.			\$	-
			\$	-
			\$	-
			\$	-
Direct Cost Total			\$	-
SUBCONSULTANTS (LIST):				
SUB CONSULTANT			TOTALS	
VIA (CM & CEI)	\$ 115,929.00	\$ 1.00	\$	115,929.00
			\$	-
			\$	-
Subconsultant Sub Total			\$	115,929.00
COST AMOUNT FOR PHASE			\$	115,929.00

DRMP, INC.8001 Belfort Parkway, Suite 200, Jacksonville, Florida 32256
Phone: 904.641.0123 | Fax: 904.641.8858**PRINCIPALS**

Lawrence L. Smith, Jr.
Wayne D. Chalifoux
Donaldson K. Barton, Jr.
Glenn J. Lusink
Jon S. Meadows
Mark D. Prochak
Mark E. Puckett

August 4, 2023

Tabatha Carlton, P.E.
Associate Principal/Transportation Director
Pond
3500 Parkway Lane, Suite 500.
Peachtree Corners, GA 30092
CarltonT@pondco.com

Re: Topographic/Bathymetric Survey – Goffinsville Boat Ramp - Nasau County - Florida

Dear Ms. Carlton:

The following is a proposal for Surveying and Mapping services. DRMP Inc. will provide labor, material, equipment, transportation, and incidentals necessary to perform a topographic/bathymetric survey at the above referenced location. The survey limits are depicted in electronic file "Goffinsville Boat Ramp_Survey Limits".pdf". Said file was prepared by this office and is referenced as an attachment to this proposal.

TASK 1 – TOPOGRAPHIC/BATHYMETRIC SURVEY - SCOPE OF WORK

- Topographic survey referenced horizontally to the Florida State Plane Coordinate System, NAD 83/2011, Florida East Zone.
- Elevations referenced to NAVD 88.
- Elevations at distances not to exceed 50 feet upland of Mean High-Water Line (MHWL).
- Elevations at distances not to exceed 25 feet waterward of MHWL.
- The horizontal location of visible above ground features and improvements.
- Mapping of MHWL as provided to this office by the Florida Department of Environmental Protection (FDEP).
- The horizontal and vertical location of edges of asphalt and centerlines.
- Critical spot elevations of existing pavements (i.e. boat ramp, docks, bulkheads, walkways, drives, parking, etc.)
- Elevations at significant breaks in grade.
- The location and elevations of storm water features (ponds, swales, ditches, berms and structures).
- The horizontal location of visible above ground indicators of utilities.
- Invert elevations, pipe sizes and materials.
- The depiction of matters of record (easements, right of ways, etc.) reasonably known of and available to this office prior to the execution of survey.
- Mapping contours at 1' intervals.
- Mapping in AutoCad Civil 3D.
- Preparation of an FDEP compliant Tidal Water Survey map.

OFFICES

Asheboro, North Carolina
Boca Raton, Florida
Cary, North Carolina
Charlotte, North Carolina
ChIPLEY, Florida
DeLand, Florida
Fort Myers, Florida
Gainesville, Florida
Jacksonville, Florida
Lakeland, Florida
Melbourne, Florida
Orlando, Florida
Panama City Beach, Florida
Pensacola, Florida



Task1 - Not to Exceed.....\$9,300.00

TASK 2 – EASEMENTS AND SKETCHES

- Prepare legal description of proposed Sovereign Submerged Lands (SSL) Easement
- Prepare accompanying sketch of description
- Proposed SSL Easement and accompanying sketch prepared in compliance with FDEP requirements

Task 2 - Not to Exceed.....\$5,540

Total - Not to Exceed – Tasks 1 & 2.....\$14,840

SCHEDULE

We will begin work within ten (10) business days of written Notice to Proceed (NTP) and the survey will be delivered within thirty (30) business days.

The survey will be performed in compliance with Standards of Practice for Surveying and Mapping in the State of Florida, Chapter 5J-17, Florida Administrative Code, pursuant to Section 472.027, Florida Statutes. All mapping will be provided in AutoCad Civil 3D. Drawing sheets will be provided on 24" X 36" paper. A digital copy and signed and sealed prints will be delivered.

If Pond desires to change or expand upon these proposed services, an additional fee shall be negotiated. This renegotiation shall be accomplished prior to commencing the additional work, and will be necessary for any additional services which are not a part of this contract:

Thank you for the opportunity of submitting this proposal. We appreciate the opportunity to be of service and look forward to working with you and your firm on this project. If you have any questions, please do not hesitate to contact us.

Sincerely,

Thomas P. Tracz, PSM
Senior Project Manager

C. William Faust III, PSM
Vice President
Jacksonville Survey Department Manager

Goffinsville Boat Ramp

Perimeter = 815'

0.73 acres

Topo Field

Task Description	Labor Rate Category	Hours	Rate	
Vertical Control (2 mile primary)	2-Person Survey Crew	4	\$170	\$680
Horizontal Control (RTK Network)	2-Person Survey Crew	4	\$170	\$680
Topo (upland) -	2-Person Survey Crew	6	\$170	\$1,020
Topo (bathymetric) - 25'	2-Person Survey Crew	10	\$170	\$1,700
Travel	2-Person Survey Crew	6	\$170	\$1,020
		30		

\$5,100 Topo Field

Topo Office

Task Description	Labor Rate Category	Hours	Rate	
Research/Prep	Surveyor V (PSM/PLS)	3	\$180	\$540
Cadd	Survey Technician III	16	\$120	\$1,920
DP&A	Survey Technician III	4	\$120	\$480
Project Management	Surveyor V (PSM/PLS)	3	\$180	\$540
QA/QC	Surveyor V (PSM/PLS)	4	\$180	\$720
		30		

\$4,200 Topo Office

TIIFT Easement

Task Description	Labor Rate Category	Hours	Rate	
Boundary Work	2-Person Survey Crew	10	\$170	\$1,700
DP&A	Surveyor V (PSM/PLS)	4	\$180	\$720
Research	Survey Technician III	2	\$120	\$240
CADD	Survey Technician III	12	\$120	\$1,440
Prepare Legal	Surveyor V (PSM/PLS)	4	\$180	\$720
Project Management	Surveyor V (PSM/PLS)	2	\$180	\$360
QA/QC	Surveyor V (PSM/PLS)	2	\$180	\$360
		36		

\$5,540 TIIFT Easement

\$14,840 Total

ENVIRONMENTAL AND GEOTECHNICAL SPECIALISTS, INC.

EGS Proposal No.: 100-451-23

July 24, 2023

Pond & Company, Inc.

10199 Southside Boulevard, Suite 103
Jacksonville, FL 32256



ATTN: Tabatha Carlton, P.E.
Associate Principal / Transportation Director

SUBJECT: Cost Proposal for Geotechnical Services
Goffinsville Boat Ramp Improvements
Nassau County, Florida

Dear Tabatha:

Attached is the Cost Estimate for Environmental and Geotechnical Specialists, Inc. (**EGS**) to perform the requested geotechnical design services at the above mentioned Project. As requested, the below cost estimate is based on the following Scope of Services;

Geotechnical Investigation – Proposed Rip-Rap and Baffle Piles

- **EGS** will complete the attached Scope of Services, in accordance with the Terms and Conditions that will be agreed to for this Contract. All work will be done in accordance with the understandings outlined in this Cost Proposal.

The attached Scope of Services and costs are based on the following understandings:

- Environmental and Geotechnical Specialists, Inc. (**EGS**) will have access to the soil boring locations and has permission to be on site;
- Bid assumes that **EGS** can perform the work between the normal business hours of Monday through Friday, 7:00am to 5:00pm;
- **EGS** is not responsible for obtaining necessary permits (excluding utility locate ticket), should they be required, for the proposed site; and,
- Costs have not been included for design services other than those outlined in the above Scope of Services; and,
- All work will be conducted in accordance with the Contract that will be agreed to for this Project, should it be approved.

ENVIRONMENTAL AND GEOTECHNICAL SPECIALISTS, INC.

EGS estimates it can complete the attached Scope of Services in 8 weeks from Notice-To-Proceed, for a Limit Not-to-Exceed amount of \$40,480.52.

Environmental and Geotechnical Specialists appreciates the opportunity to provide the attached Cost Estimate. Authorization of this Cost Proposal can be accomplished by either of the following two (2) methods:

- Agreeing to **EGS's** Terms and Conditions by signing the attached authorization (See Page 3), and submitting an original (or pdf) copy back to our office for processing; **or**,
- Providing **EGS** a Contract for our review and signature.

If you have any questions concerning the costs, please call me. Thank you again for considering EGS for this Project.

Sincerely,

Environmental and Geotechnical Specialists, Inc.

Matt Landschoot

Matthew R. Landschoot, P.E.
Vice President

Attachment: **EGS Cost Proposal (7-24-2023)**
 Figure – Preliminary Site Aerial and Photo

ENVIRONMENTAL AND GEOTECHNICAL SPECIALISTS, INC.

EGS Proposal No.: 100-451-23

July 24, 2023

Pond & Company, Inc.

10199 Southside Boulevard, Suite 103
Jacksonville, FL 32256



ATTN: Tabatha Carlton, P.E.
Associate Principal / Transportation Director

SUBJECT: Cost Proposal for Geotechnical Services
Goffinsville Boat Ramp Improvements
Nassau County, Florida

CLIENT AUTHORIZATION:

I, (above Client), hereby agree to EGS's Standard Terms and Conditions, and authorize **EGS** to conduct the investigation, as outlined in this Cost Proposal:

Client: _____

Signature: _____

Name: _____

Title: _____

Date: _____

ENVIRONMENTAL AND GEOTECHNICAL SPECIALISTS, INC. PROJECT ESTIMATE

PROJECT: GOFFINSVILLE BOAT RAMP IMPROVEMENTS **DATE:** 7/24/2023
LOCATION: NASSAU COUNTY, FL **PROPOSAL:** 100-451-23

CLIENT: POND AND COMPANY, INC.

TASK: GEOTECHNICAL INVESTIGATION - GOFFINSVILLE BOAT RAMP IMPROVEMENTS
 PROPOSED RIP-RAP AND BAFFLE PILES TO REDUCE WATER FLOW VELOCITY

Scope of Services:

- Field**
- Mobilize on Site
- Install 2-50 Feet Deep SPT Borings in the Areas of proposed Rip-Rap and Baffle Piles (2 Field Days)
***Specialty Shallow Draft Barge Required.*
- Laboratory (Classification and Uniformity)**
- Particle Size Analysis Every 5 Feet (20 Tests)
- Plastic Limit and Liquid Limit Ever 20 Feet (5 Tests)
- Organic Test Every 20 Feet (5 Tests)
- Report**
- Prepare a Geotechnical Report, Including:
- Subsurface Materials Encountered
- Plan View Map Depicting the Estimated Settlement of Proposed Rip-Rap
- Geotechnical Design Paramaters for the Proposed Baffle Piles
- Geotechnical Design Recommendations and Construction Considerations

	UNITS	No. of UNITS	COST/UNIT	COST
LABOR CATEGORY				
Chief Engineer	Hour	2	\$187.49	\$374.98
Senior Engineer	Hour	4	\$202.81	\$811.24
Engineer	Hour	15	\$126.26	\$1,893.90
Engineering Intern	Hour	30	\$82.88	\$2,486.40
Engineering Technician	Hour	15	\$73.64	\$1,104.60
Contract Coordinator	Hour	2	\$99.82	\$199.64
Total Labor				\$6,870.76
FIELD CATEGORY				
UTILITY CLEARANCE / FIELD COORDINATION / LOGGING				
Senior Engineering Technician	Hour	30	\$112.08	\$3,362.40
Amphibious Drilling to be procured by the County under a separate contract				
Total Field				\$3,362.40
LABORATORY CATEGORY				
Particle Size Anlyns AASHTO T88 (No Hydrometer)	Test	20	\$94.00	\$1,880.00
Liquid Limit AASHTO T89	Test	5	\$57.00	\$285.00
Plastic Limit & Plasticity Index AASHTO T90	Test	5	\$57.00	\$285.00
Organic Content Ignition FM 1 T-267	Test	5	\$43.00	\$215.00
Total Laboratory				\$2,665.00
			SUBTOTAL:	\$12,898.16
			LIMIT NOT-TO-EXCEED TOTAL:	\$12,898.16

NOTE: ALL WORK WILL BE PERFORMED IN ACCORDANCE WITH THE TERMS AND CONDITIONS
 AGREED TO FOR THIS CONTRACT.

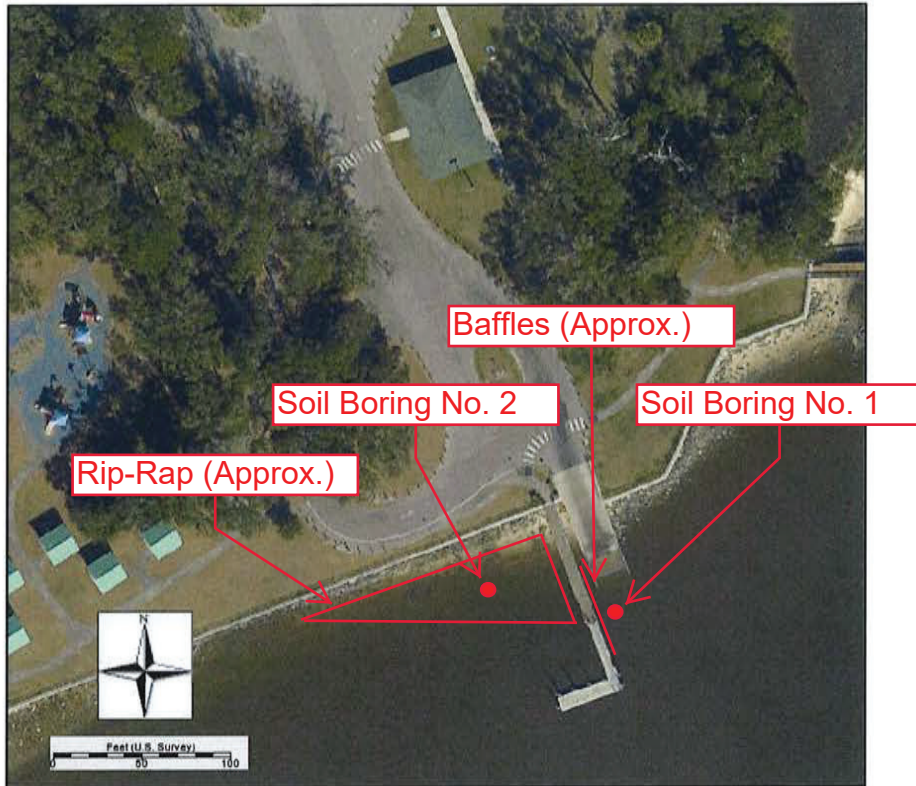


Figure 2: Goffinsville Park boat ramp

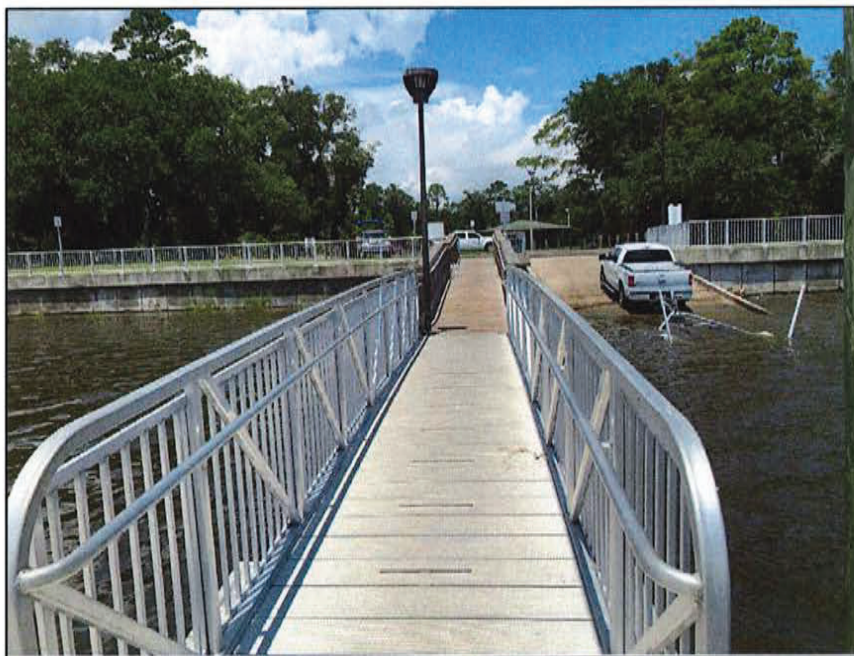


Figure 3: Site photo from the dock toward the seawall

CONTRACT FEE SUMMARY FOR GOFFINSVILLE BOAT RAMP PROJECT

**PART I - GENERAL**

1. Project Constructability Review Services Goffinsville Boat Ramp Improvements	2. Contract Number
3. Name of Consultant VIA Consulting Services, Inc. Subconsultant	4. Date of Proposal 7/18/2023

PART II - LABOR RELATED COSTS

5. Direct Labor	Hourly Rate	Estimated Hours	Estimated Cost	TOTAL
Principal	\$ 240.00	0	\$ -	
Senior Project Engineer	\$ 240.00	20	\$ 4,800.00	
Project Administrator	\$ 162.00	32	\$ 5,184.00	
Contract Support Specialist	\$ 109.50	0	\$ -	
Senior Inspector	\$ 108.00	0	\$ -	
Inspector	\$ 81.00	0	\$ -	
Admin	\$ 65.00	6	\$ 390.00	
TOTAL DIRECT LABOR				\$ 10,374.00

PART III - OTHER COSTS

9. Miscellaneous Direct Costs	
Transportation	\$ -
Copying	\$ -
Shipping & Mail	\$ -
Miscellaneous Direct Costs Sub Total	
ADA Assessment Analysis Task Cost	\$ -
10. REIMBURSABLE COSTS (Limiting Amount)	
Lab Testing and Asphalt Testing	\$ -
SUBTOTAL REIMBURSABLES	\$ -

PART IV - SUMMARY

TOTAL AMOUNT OF CONTRACT (Reimbursables/NTE) (Items 7,8,9 and 10)	\$ 10,374.00
---	---------------------

VIA CONSULTING SERVICES

DESCRIPTION: Goffinsville Boat Ramp Part Time CEI

Personnel Classification(s)	2024												2024 Total	2025												2025 Total	Totals in Months	
	Jan	Feb	Mar	Apr	May	Jun	July	Aug	Sept	Oct	Nov	Dec		Jan	Feb	Mar	Apr	May	Jun	July	Aug	Sept	Oct	Nov	Dec			
Pete Sheridan Principal													0.00												0.00	0.00	\$ -	\$240.00
Pete Sheridan Sr. Project Engineer									0.1	0.1	0.1	0.1	0.40	0.1	0.1										0.20	0.60	\$ 23,760.00	\$240.00
Danny Weber Project Administrator									0.2	0.2	0.2	0.2	0.80	0.2	0.2										0.40	1.20	\$ 32,076.00	\$162.00
Jemeni Guillory Contract Support Specialist									0.1	0.1	0.1	0.1	0.40	0.1	0.1										0.20	0.60	\$ 10,593.00	\$107.00
VIA Sr. Roadway Inspector									0.5	0.5	0.5	0.5	2.00	0.5	0.5										1.00	3.00	\$ 49,500.00	\$100.00
VIA Roadway Inspector													0.00												0.00	0.00	\$ -	\$ 76.00
													0.00												0.00	0.00	\$ -	\$ -
Totals in Man Months	0.00	0.00	0.00	0.00	0.00	0.00	0.00	0.90	0.90	0.90	0.90	3.60	0.90	0.90	0.00	0.00	0.00	0.00	0.00	0.00	0.00	0.00	0.00	0.00	1.80	5.40		
	Jan	Feb	Mar	Apr	May	Jun	July	Aug	Sept	Oct	Nov	Dec	Jan	Feb	Mar	Apr	May	Jun	July	Aug	Sept	Oct	Nov	Dec		891		
	Manhours																									\$115,929.00		

Comments:

\$550,000.00 21.08% Construction Costs

No need to type if kept legible.

Denote a time period for each construction project.

Denote a time period for consultant services including pre and post services of 30 working days, and 30 calendar days, respectively.

Denote classifications from consultant scope, and full time equivalents for time period needed.

Personal are to be distributed to each construction project on additional sheets as necessary.

\$115,929.00 CEI Fee*

1 man month = 165 Manhours

*CEI Fee is based on a 6 month Construction duration. If Construction exceeds 6 months additional fees will incur. Any unforeseen items during construction, such a lab testing, will be taken from the contracts Contingency fund.